

125-12G - Datasheet

CLUTCH / BRAKE UNITS

Butt shaft construction, drip-proof type

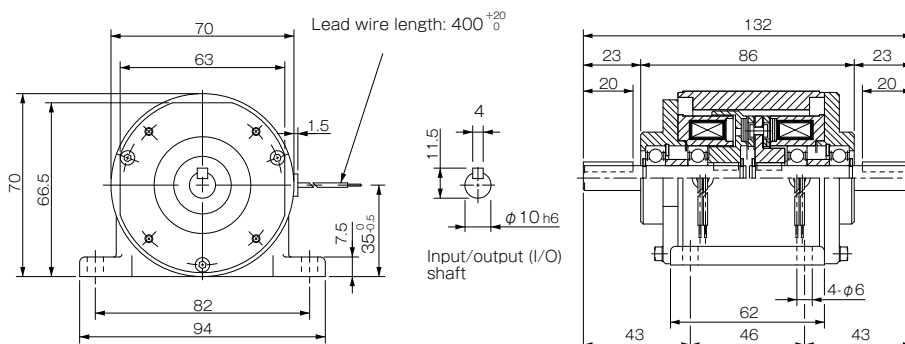
Specifications

Model	Size	Dynamic friction torque T_d [N·m]	Static friction torque T_s [N·m]	Coil [at 20 °C]				Heat resistance class	Max. rotation speed [min ⁻¹]	Rotating part moment of inertia J [kg·m ²]	Total work performed until readjustment of the air gap E_r [J]	Armature pull-in time t_a [s]	Torque build-up time t_b [s]	Torque decrease time t_c [s]	Mass [kg]
				Voltage [V]	Wattage [W]	Current [A]	Resistance [Ω]								
125-05-12G	05	2.4	—	DC24	10	0.42	58	B	3000	2.4×10^{-5}	9×10^6	C: 0.012 B: 0.010	C: 0.031 B: 0.023	C: 0.040 B: 0.012	1.2
125-06-12G	06	5	5.5	DC24	11	0.46	52	B	3000	1.28×10^{-4}	36×10^6	C: 0.020 B: 0.015	C: 0.041 B: 0.033	C: 0.020 B: 0.015	2.1
125-08-12G	08	10	11	DC24	15	0.63	38	B	3000	3.70×10^{-4}	60×10^6	C: 0.023 B: 0.016	C: 0.051 B: 0.042	C: 0.030 B: 0.025	4.2
125-10-12G	10	20	22	DC24	20	0.83	29	B	3000	1.40×10^{-3}	130×10^6	C: 0.025 B: 0.018	C: 0.063 B: 0.056	C: 0.050 B: 0.030	6.8
125-12-12G	12	40	45	DC24	25	1.04	23	B	3000	3.85×10^{-3}	250×10^6	C: 0.040 B: 0.027	C: 0.115 B: 0.090	C: 0.065 B: 0.050	12
125-16-12G	16	80	90	DC24	35	1.46	16	B	3000	1.35×10^{-2}	470×10^6	C: 0.050 B: 0.035	C: 0.160 B: 0.127	C: 0.085 B: 0.055	22

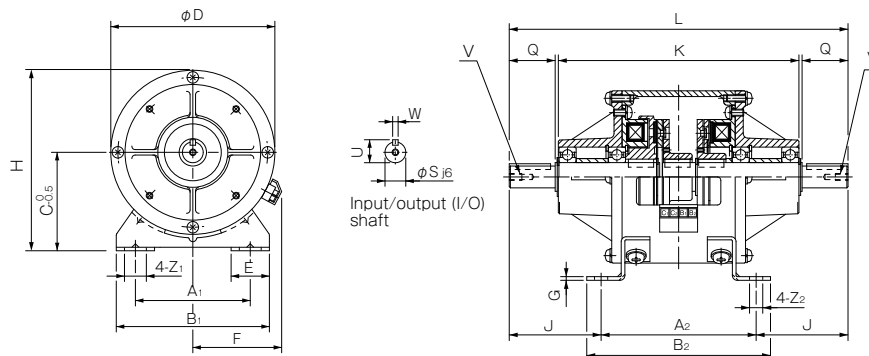
* The dynamic friction torque, T_d , is measured at a relative speed of 100 min⁻¹.

Dimensions

125-05-12G



125-□-12G



Unit [mm]

Size	Dimensions of part											Dimensions of shaft								
	A ₁	A ₂	B ₁	B ₂	C	D	E	F	G	H	J	K	L	Z ₁	Z ₂	Q	S	U	V	W
06	65	90	90	105	65	100	27.5	61	2.6	115	48.5	132	187	13.5	6.5	25	11	12.5	M4 × 0.7, length: 8	4
08	80	110	110	130	80	125	32.5	72	3.2	142.5	63	171	236	15.5	9	30	14	16	M4 × 0.7, length: 8	5
10	105	135	140	160	90	150	35	81	3.2	165	80	210	295	20	11.5	40	19	21	M6 × 1, length: 11	5
12	135	160	175	185	112	190	42.5	97	4.5	207	108	270	376	24	11	50	24	27	M6 × 1, length: 11	7
16	155	200	200	230	132	230	45	109	6	247	145	362	490	28	14	60	28	31	M6 × 1, length: 11	7

* The input/output shaft keyways are old JIS standard class 2 while the key is old JIS standard class 1.
 * When inserting pulleys or the like onto input/output shafts, use the supplied insertion set.

How to Place an Order

125-06-12G
 Size