

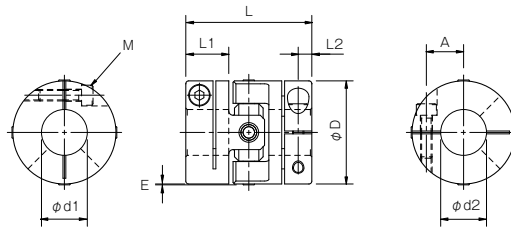
PARAFLEX CPU – Datasheet

Specifications

Model	Rated torque [N·m]	Misalignment		Max. rotation speed [min ⁻¹]	Static torsional stiffness [N·m/rad]	Moment of inertia [kg·m ²]	Mass [kg]
		Parallel [mm]	Angular [°]				
CPU-26-A	2.2	0.3	4	4000	600	3.57 × 10 ⁻⁶	0.04
CPU-36-A	10	0.4	4	3500	1350	1.64 × 10 ⁻⁵	0.09
CPU-46-A	25	0.5	4	3000	1650	5.33 × 10 ⁻⁵	0.19

- Higher rpm possible with balancing.
- The moment of inertia and mass are specified for the maximum bore diameter.

Dimensions



Model	d1 - d2		D	E	L	L1	L2	M	A	Unit [mm]
	Min.	Max.								
CPU-26-A	6	12	26	0.3	36	12	4	M3	9	
CPU-36-A	8	18	36	0.3	44	15	4.75	M4	13	
CPU-46-A	10	22	46	0.3	54	18	6.5	M5	16	

- Insert the shaft to at least the dimension L1. (Note that the shaft cannot go all the way through.)
- The recommended processing tolerance for paired mounting shafts is the h7 class.

Standard Bore Diameter

Model	Standard Bore Diameter d1, d2 [mm]															
	6	6.35	7	8	9	9.525	10	11	12	14	15	16	18	19	20	21
CPU-26-A	●	●	●	●	●	●	●	●	●							
CPU-36-A				●	●	●	●	●	●	●	●	●	●			
CPU-46-A							●	●	●	●	●	●	●	●	●	●

- Special bore diameters are possible at extra charge.

How to Place an Order

CPU-36-A-12B-12B

Size ——— Bore diameter: d1 (Small diameter) – d2 (Large diameter)
 Type A: Aluminum type B: Clamping hub