

CYT - Datasheet

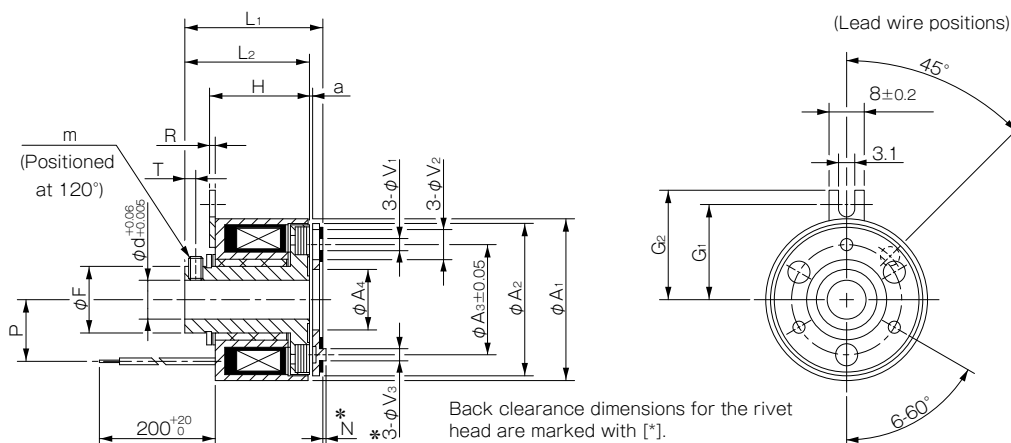
BEARING-MOUNTED TYPE

Specifications

Model	Size	Dynamic friction torque T_d [N-m]	Coil [at 20 °C]				Heat resistance class	Lead wire		Max. rotation speed [min ⁻¹]	Rotating part moment of inertia		Allowable engaging energy E_{ea2} [J]	Total work E_r [J]	Armature pull-in time t_a [s]	Torque build-up time t_p [s]	Torque decrease time t_d [s]	Mass [kg]
			Voltage [V]	Wattage [W]	Current [A]	Resistance [Ω]		UL style	Size		Armature [kg-m ²]	Rotor [kg-m ²]						
CYT-025-33B	025	0.4	DC24	4.5	0.188	128	B	UL3398	AWG26	3600	1.00×10^{-6}	1.43×10^{-6}	800	1.0×10^6	0.014	0.028	0.030	0.07
CYT-03-33B	03	0.5	DC24	5.5	0.23	105	B	UL3398	AWG26	3600	1.30×10^{-6}	1.85×10^{-6}	900	1.5×10^6	0.015	0.030	0.040	0.13
CYT-03-33M										500	1.90×10^{-6}	1.90×10^{-6}						0.11
CYT-04-33B	04	1.0	DC24	5.9	0.25	98	B	UL3398	AWG26	3600	5.15×10^{-6}	1.00×10^{-5}	1900	2.0×10^6	0.030	0.040	0.040	0.26
CYT-04-33M										500	1.05×10^{-5}	1.05×10^{-5}						0.23

- The dynamic friction torque, T_d , is measured at a relative speed of 100 min⁻¹.
- The moment of inertia of a rotating body and mass are specified for the maximum bore diameter.
- Keep supply voltage fluctuation to within 10% of coil voltage. In case of use, the current feed may only be $\leq 50\%$ of the operating time.

Dimensions (CYT-□-33M)



Size	Radial direction dimensions											Axial direction dimensions								
	d	A ₁	A ₂	A ₃	A ₄	F	V ₁	V ₂	V ₃	G ₁	G ₂	m	H	R	L ₁	L ₂	P	N	T	a
03	6 8	34	32	23	12.5	14	3-2.6	3-5.5	3-6	20	23	M3	21	1.2	28.6	26.2	13	3	2.3	0.2 ±0.05
04	8 10	45	42	30	18.5	18	3-3.1	3-6	3-6	25	27.5	M4	25.3	1.2	35.1	35.1	17.5	3.5	3	0.2 ^{+0.05} / _{-0.1}

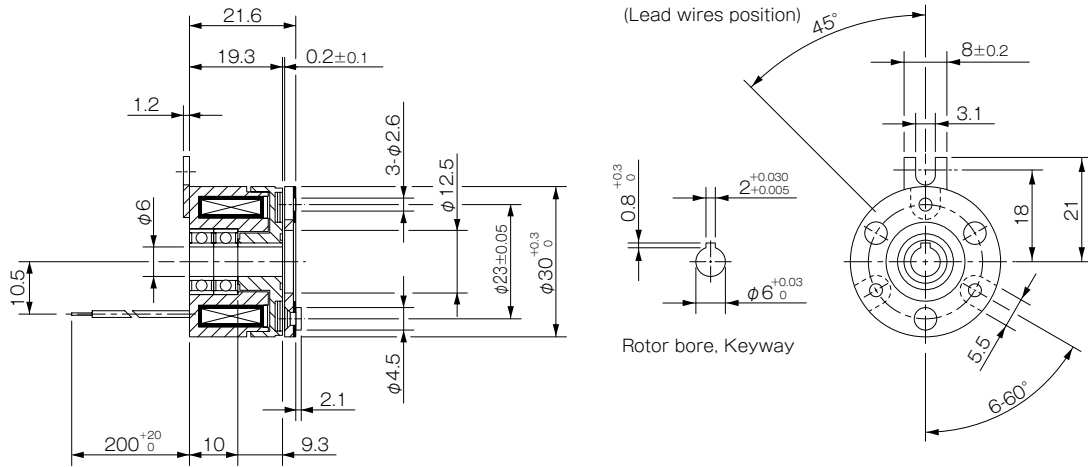
• Dimensional symbols N and V₃ indicate the clearance dimensions for the rivet head.

How to Place an Order

CYT-03-33M 24V 6

Size Rotor bore diameter (dimensional symbol d)

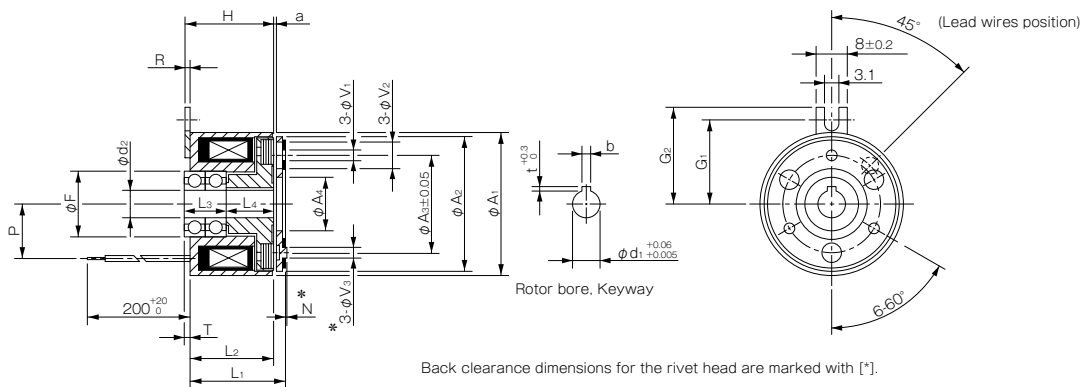
■ Dimensions (CYT-025-33B)



How to Place an Order

CYT-025-33B 24V 6

■ Dimensions (CYT-□-33B)



Back clearance dimensions for the rivet head are marked with [*].

Size	Nominal diameter	Radial direction dimensions														Axial direction dimensions								Shaft bore dimensions				Unit [mm]
		A ₁	A ₂	A ₃	A ₄	F	V ₁	V ₂	V ₃	G ₁	G ₂	H	R	L ₁	L ₂	L ₃	L ₄	P	N	T	a	d ₂	d ₁	b	t			
03	6	34	32	23	12.5	15	3-2.6	3-5.5	3-6	20	23	21	1.2	22.2	19.8	10	11.3	13	3	1.5	0.2 ± 0.05	6	6	2 ^{+0.030} _{-0.005}	0.8 ^{+0.3} ₀			
	8	34	32	23	12.5	16	3-2.6	3-5.5	3-6	20	23	21	1.2	22.2	19.8	10	11.3	13	3	1.5	0.2 ± 0.05	8	8	2 ^{+0.030} _{-0.005}	0.8 ^{+0.3} ₀			
04	8	45	42	30	18.5	19	3-3.1	3-6	3-6	25	28	25.3	1.2	26.8	24.1	12	13	17.5	3.5	0.9	0.2 ^{+0.05} _{-0.1}	8	8	2 ^{+0.030} _{-0.005}	0.8 ^{+0.3} ₀			
	10	45	42	30	18.5	19	3-3.1	3-6	3-6	25	28	25.3	1.2	26.8	24.1	14	11	17.5	3.5	0.9	0.2 ^{+0.05} _{-0.1}	10	10	3 ^{+0.025} ₀	1.2 ^{+0.3} ₀			

* Dimensional symbols N and V3 indicate the clearance dimensions for the rivet head.

How to Place an Order

CYT-03-33B 24V 6

Size

Nominal diameter