

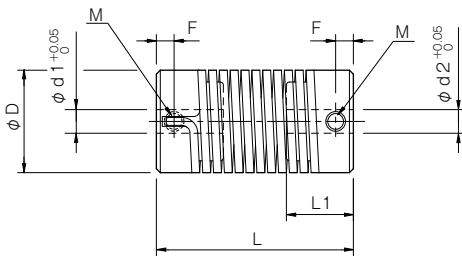
BAUMANNFLEX ZG - Datasheet

Specifications

Model	Torque		Misalignment			Max. rotation speed [min ⁻¹]	Torsional stiffness [N-m/rad]	Moment of inertia [kg-m ²]	Mass [kg]
	Nominal [N-m]	Max. [N-m]	Parallel [mm]	Angular [°]	Axial [mm]				
ZG-6	0.15	0.3	0.5	5	± 0.5	3000	0.17	1.95 × 10 ⁻⁷	0.020
ZG-8	0.5	1.0	1.0	8	± 1.0	3000	0.48	1.02 × 10 ⁻⁶	0.070
ZG-14	1.5	3.0	1.2	8	± 1.0	3000	1.70	1.15 × 10 ⁻⁵	0.130

- Higher rpm possible with balancing.
- The moment of inertia and mass are specified for the maximum bore diameter.

Dimensions



Model	d1 - d2			D	L	L1	F	M	Unit [mm]
	Pilot bore	Min.	Max.						
ZG-6	2	3	6	12	25	9	2.4	M3	
ZG-8	3	4	8	16	35	12.5	3.5	M4	
ZG-14	6	7	14	26	50	17	4.5	M5	

- The set screw in d1 and d2 are not alligned.

Standard Bore Diameter

Model	Standard bore diameter d1, d2														
	3	4	5	6	6.35	7	8	9	9.5	9.525	10	11	12	12.7	14
ZG-6	●	●	●	●											
ZG-8		●	●	●	●	●	●								
ZG-14						●	●	●	●	●	●	●	●	●	●

- Keyway possible on request.

How to Place an Order

ZG-14 10-14
 Size Bore diameter: d1 (Small diameter) - d2 (Large diameter)
 Blank: Pilot bore
 Material: Hub - Zinc alloy, Spring - Spring steel