

MHL - Datasheet

Specifications (Aluminum alloy)

Model	Max. Torque			Misalignment			Stiffness		Max. rotation speed [min ⁻¹]	Moment of inertia [kg·m ²]	Mass [kg]
	Short-term [N·m]	One-sided [N·m]	Reversing [N·m]	Parallel [mm]	Angular [°]	Axial [mm]	Max. Torsional [N·m/rad]	Max. Axial spring [N/mm]			
MHL 100	3.2	1.6	0.8	±0.75	5	±0.25	25	44	3,600	4.52×10 ⁻⁶	0.054
MHL 125	6.4	3.2	1.6	±0.75	5	±0.25	50	29	3,600	15.2×10 ⁻⁶	0.113
MHL 150	12.0	6.0	3.0	±0.75	5	±0.25	91	34	3,600	34.1×10 ⁻⁶	0.180

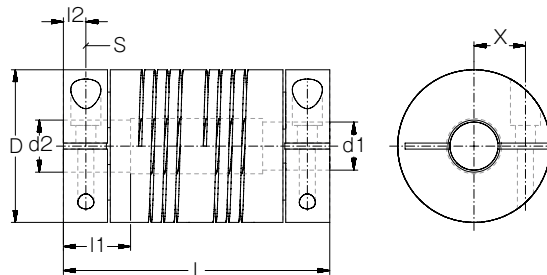
• Other sizes available on request.
• Version with blind bore possible on request.

Specifications (Stainless steel)

Model	Max. Torque			Misalignment			Stiffness		Max. rotation speed [min ⁻¹]	Moment of inertia [kg·m ²]	Mass [kg]
	Short-term [N·m]	One-sided [N·m]	Reversing [N·m]	Parallel [mm]	Angular [°]	Axial [mm]	Max. Torsional [N·m/rad]	Max. Axial spring [N/mm]			
MHL 100	6.8	3.4	1.7	±0.75	5	±0.25	70	56	3,600	12.6×10 ⁻⁶	0.150
MHL 125	14.2	7.1	3.6	±0.75	5	±0.25	130	64	3,600	42.3×10 ⁻⁶	0.315
MHL 150	23.5	11.8	5.9	±0.75	5	±0.25	190	78	3,600	96.1×10 ⁻⁶	0.507

• Other sizes available on request.
• Version with blind bore possible on request.

Dimensions



Unit [mm]

Model	d1 · d2		D	L	l1	l2	S	Tightening torque of screws [N·m]
	Min.	Max.						
MHL 100	6.0	10.0	25.4	44.5	9.4	3.8	M3	2.0
MHL 125	8.0	15.0	31.8	60.2	13.0	5.6	M4	4.7
MHL 150	10.0	16.0	38.1	66.5	16.8	5.6	M4	4.7

• Other sizes available on request.
• Version with blind bore possible on request.

Standard Bore Diameter (Aluminum alloy)

Nominal bore diameter		Standard bore diameter, d1/d2 [mm] and short term torque [N-m]				
		6	8	10	12	
Supported bore diameter for each model	MHL 100	6	3.2	2.7	2.3	
		8	2.7	2.7	2.3	
		10	2.3	2.3	2.3	
	MHL 125	8		6.4	5.5	4.1
		10		5.5	5.5	4.1
		12		4.1	4.1	4.1
	MHL 150	10			12.0	10.3
		12			10.3	10.3

Unit [mm]

Standard Bore Diameter (Stainless steel)

Nominal bore diameter		Standard bore diameter, d1/d2 [mm] and short term torque [N-m]							
		6	8	10	12	14	15	16	
Supported bore diameter for each model	MHL 100	6	6.8	5.9	5.0				
		8	5.9	5.9	5.0				
		10	5.0	5.0	5.0				
	MHL 125	8		14.2		9.6		7.3	
		12		9.6		9.6		7.3	
		15		7.3		7.3		7.3	
	MHL 150	12				23.5	20.7		17.5
		14				20.7	20.7		17.5
		16				17.5	17.5		17.5

Unit [mm]

How to Place an Order

MHL-015-8B-10B-AL

Size

Material
AL: Aluminum alloy
VA: Stainless steel
Bore diameter
d1/d2